



---

Str. Atomistilor nr. 409, Magurele, Judetul Ilfov, Romania,  
Tel: (+4) 021 404 2303, Fax: (+4) 021 457 4440,  
E-mail: ursui@nipne.ro, dseuleanu@fdcl.eu

# RDI infrastructure and the integrated development of the Magurele Science Park, High Tech Cluster and incubator

Drd. Dragos Seuleanu, EMBA  
CEO  
Magurele High Tech Cluster

# Innovation Eco-system

## MAGURELE HIGH TECH CLUSTER

From 45 entities to 87 entities

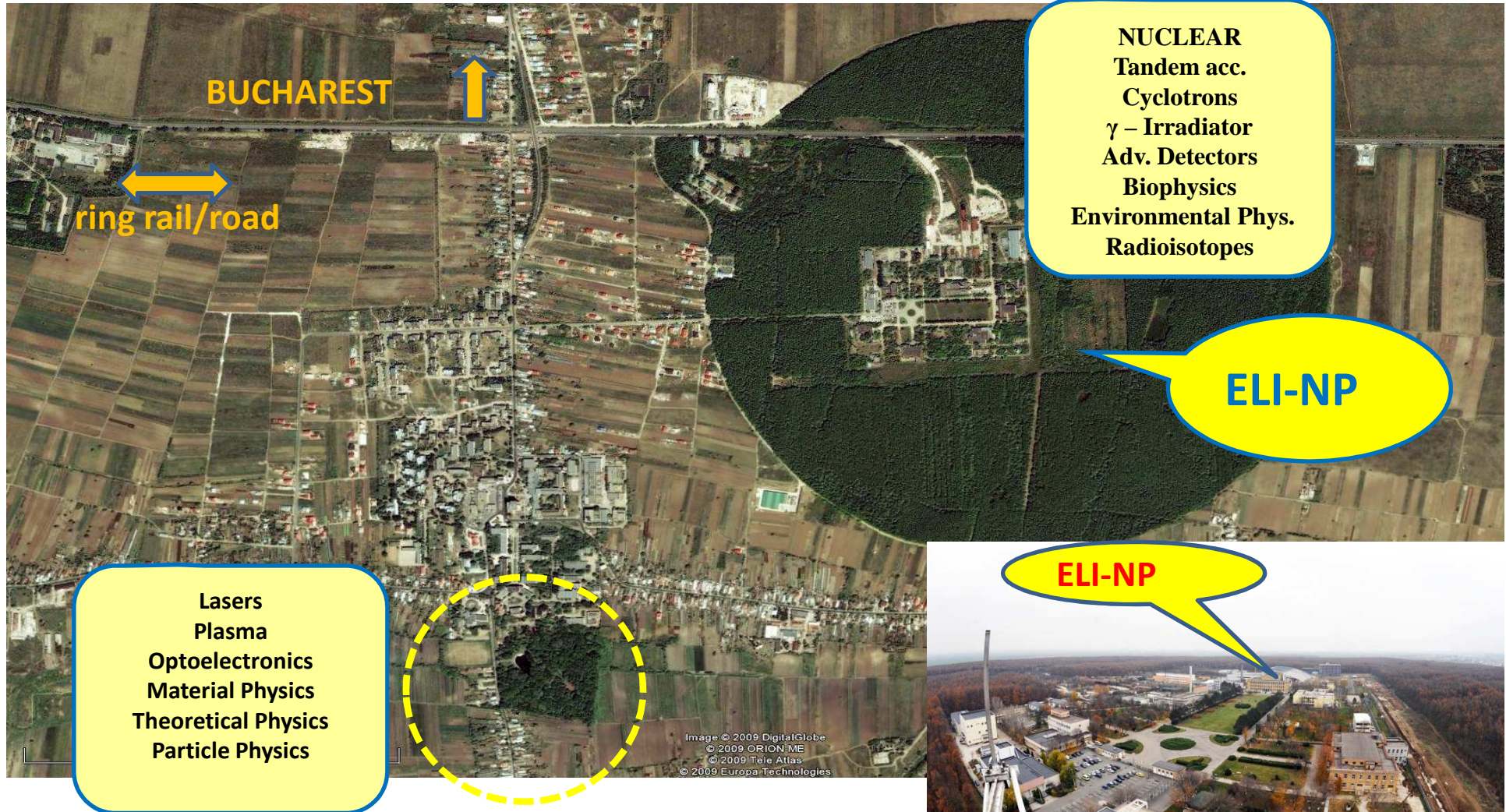
No	Type	Advanced Science and Innovative Business	National & Local Administration
18	RD&I		
5	Universities	<ul style="list-style-type: none"> <li>• Magurele High Tech Cluster</li> </ul>	<ul style="list-style-type: none"> <li>• Ilfov County</li> </ul>
52	SMEs	<ul style="list-style-type: none"> <li>• Incubator</li> </ul>	<ul style="list-style-type: none"> <li>• City of Magurele</li> </ul>
4	Local authorities	<ul style="list-style-type: none"> <li>• Science Park</li> </ul>	<ul style="list-style-type: none"> <li>• Municipality of Bucharest</li> </ul>
6	NGOs	<ul style="list-style-type: none"> <li>• Laser Valley – Land of Lights (Bucharest – Magurele – Giurgiu – Ruse)</li> </ul>	<ul style="list-style-type: none"> <li>• Giurgiu County</li> </ul>
1	Cluster		<ul style="list-style-type: none"> <li>• The National Authority for Scientific Research and Innovation</li> </ul>
1	Hospital		

## Extreme Light Infrastructure – 3 pillars in Central Europe

- Pan-European Research Centre conducting fundamental and applied research
  - laser, plasma and nuclear physics and engineering, astrophysics, material and life sciences a.o.
- Part of the European Strategy Forum on Research Infrastructures
- ERDF co-financing and **JASPERS advisory support**
- 3 locations (4<sup>th</sup> project envisioned)
  - **ELI – Beamlines**
    - in Dolni Brezhany, near Prague, Czech Republic
  - **ELI – Nuclear Physics** (ELI-NP)
    - Magurele, Romania,
  - **ELI – Attosecond Light Pulse Source** (ELI-ALPS)
    - Szeged, Hungary,
  - **ELI – Ultra High Fields**
    - *Location to be decided*
- ELI-NP is linked to the local development plans as well as Smart Specialisation Strategy

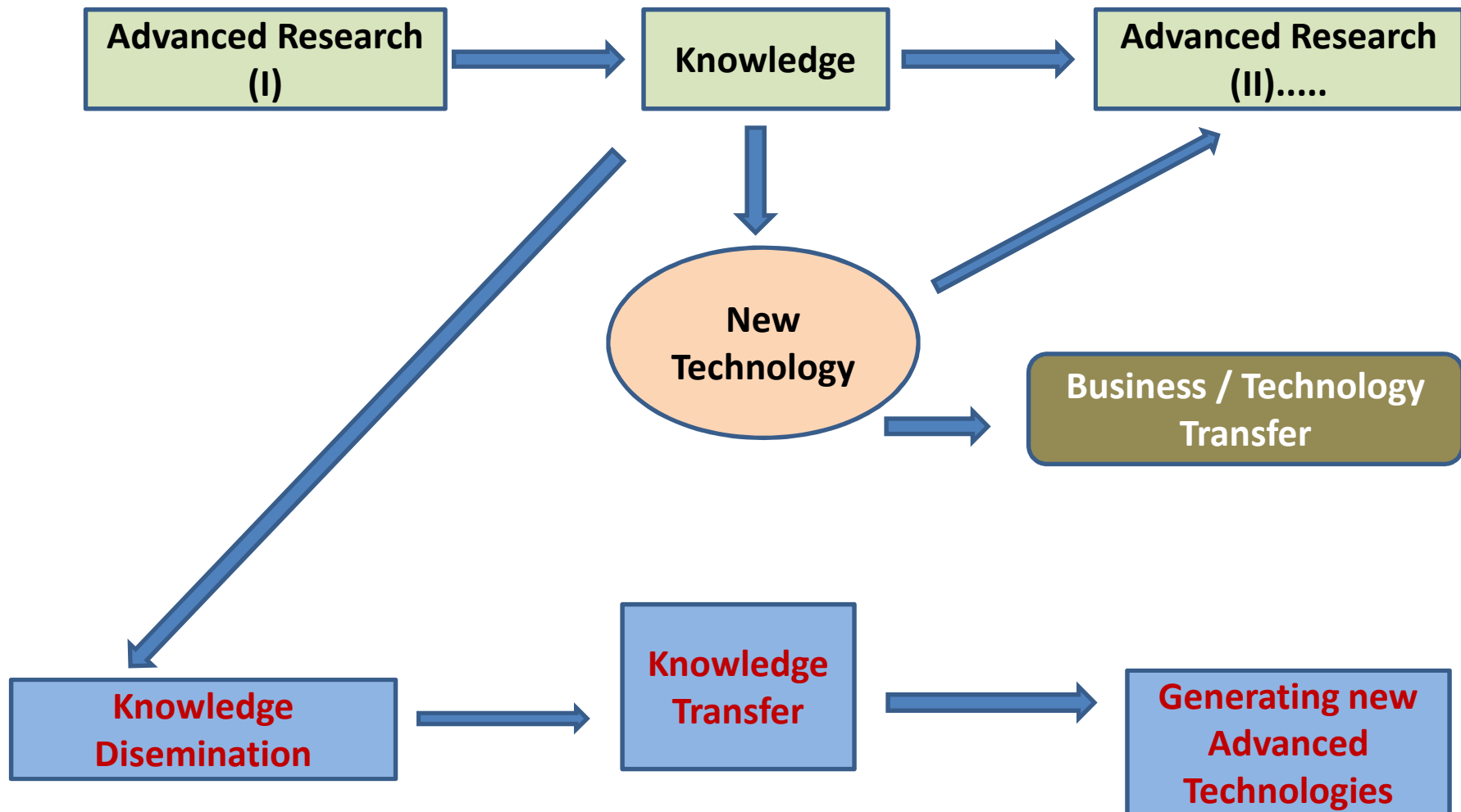


# ELI-NP, Magurele, Romania



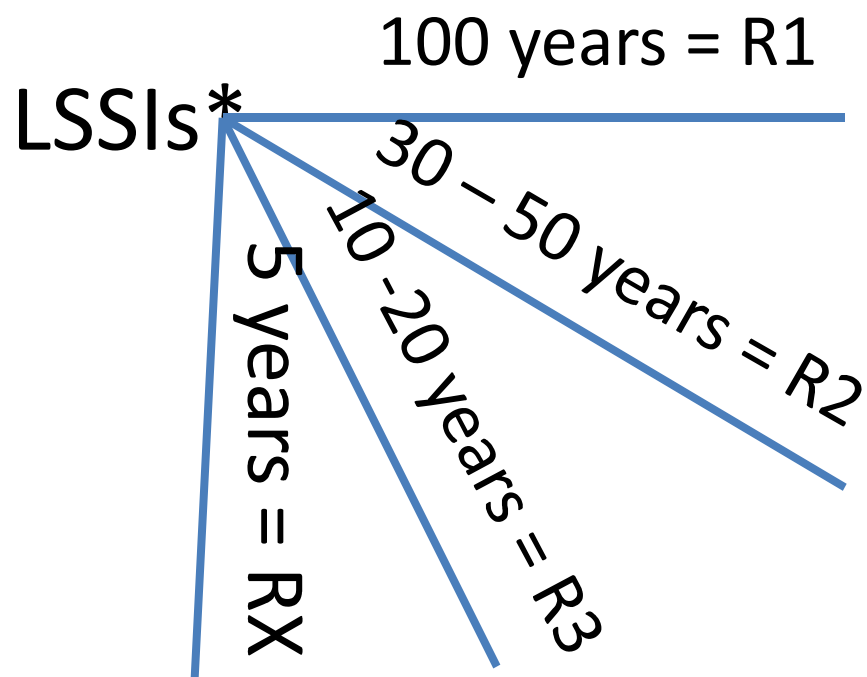
Implementing the Urban Agenda for the EU:  
A Smart City Approach





# A new business model based on advanced research (1)

## Forward jump in knowledge time

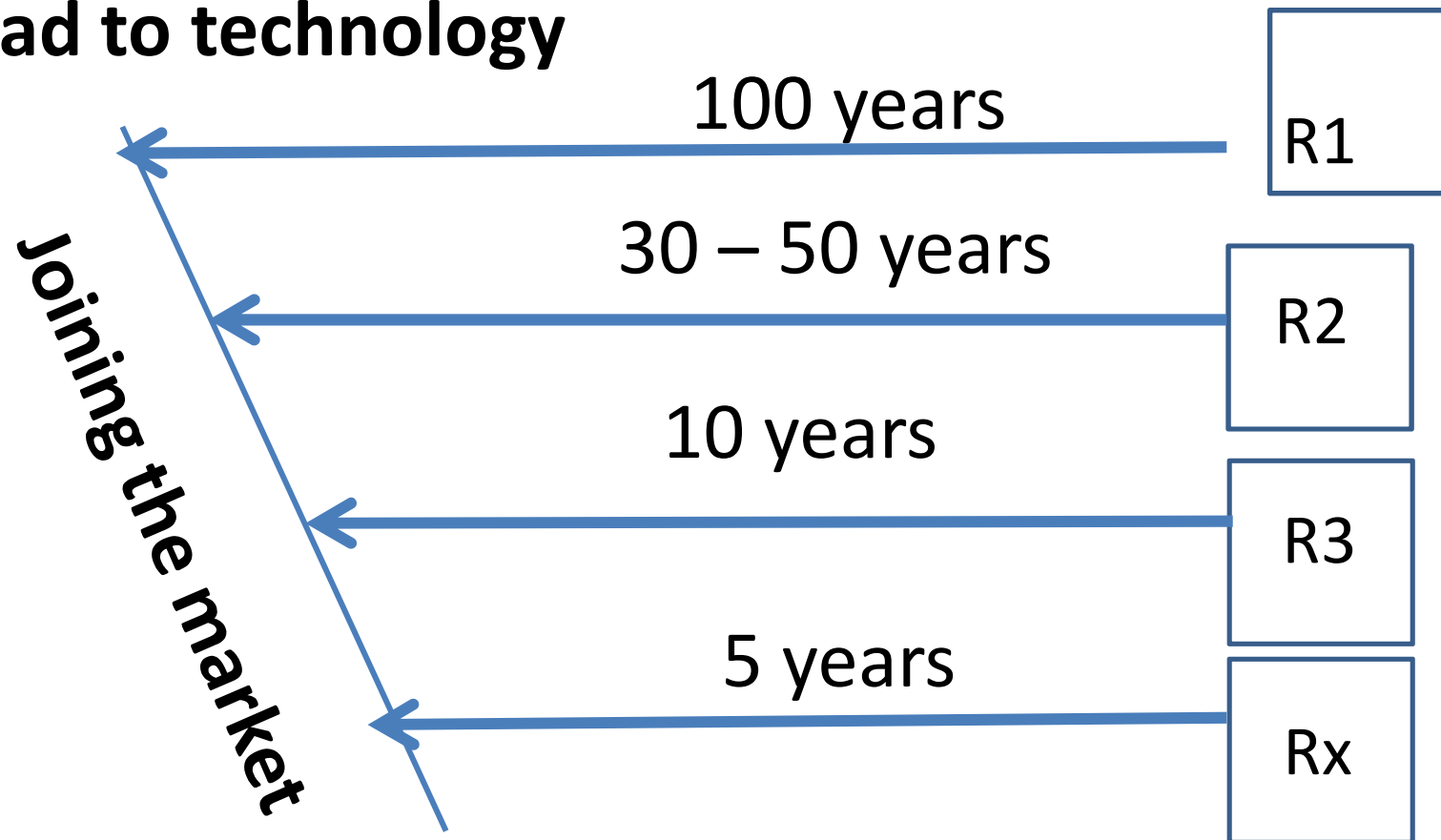


\*Large scale scientific infrastructures

# A new business model based on advanced research (2)

Backward jump in technology time

## The road to technology



# Cristal Clear Business on ELI-NP

## What do we need for the implementation of the experiments:

1. State-of-the-art electronics: in many cases not on shelf; new designs are needed
2. State-of-the-art detectors: in some cases designed by us; construction to be outsourced
3. Computer equipment and software: to be supplied, maintained and upgraded
4. ....
5. BUSINESS
6. ....



# Do we have a technology transfer?

## A real one?

### Yes, we have a real one!

Laser welding with two difficult components! The contract is around 40,000 Euros.

It was not easy because of:

- 1. Lack of trust between potential partners**
- 2. Terminology and cultural differences between researchers and business persons**



Academician Nicolae Victor Zamfir  
Director General  
Horia Hulubei National Institute for R&D in  
Physics and Nuclear Engineering (IFIN-HH)  
Extreme Light Infrastructure – Nuclear Physics  
Project

---

Str. Atomistilor nr. 409, Magurele, Judetul Ilfov, Romania,  
Tel: (+4) 021 404 2303, Fax: (+4) 021 457 4440,  
E-mail: ursui@nipne.ro, dseuleanu@fdcl.eu

The main conclusion:

A new business model for Europe on the rise:  
Doing business based on  
**advanced research,  
knowledge transfer  
and  
local communities**

# National Day of Romania

**1<sup>st</sup> of December  
1918 – 2016**





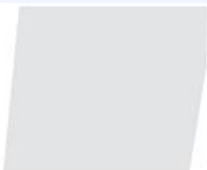
---

Str. Atomistilor nr. 409, Magurele, Judetul Ilfov, Romania,  
Tel: (+4) 021 404 2303, Fax: (+4) 021 457 4440,  
E-mail: ursui@nipne.ro, dseuleanu@fdcl.eu

***Thank you for your attention!***

Drd. Dragos Seuleanu, EMBA

- Mobil: +40 744 312-651
- E-mail: dragos.seuleanu@eli-np.ro



For info or further questions on this seminar and the activities of the JASPERS Networking Platform, please contact:

JASPERS Networking and Competence Centre

[jaspersnetwork@eib.org](mailto:jaspersnetwork@eib.org)

[www.jaspersnetwork.org](http://www.jaspersnetwork.org)